

BENZIE - LEELANAU DISTRICT HEALTH DEPARTMENT

BENZIE OFFICE

**6051 Frankfort Hwy., Suite 100
Benzonia, Michigan 49616
Phone: (231) 882-4409
Fax: (231) 882-2204**

LEELANAU OFFICE

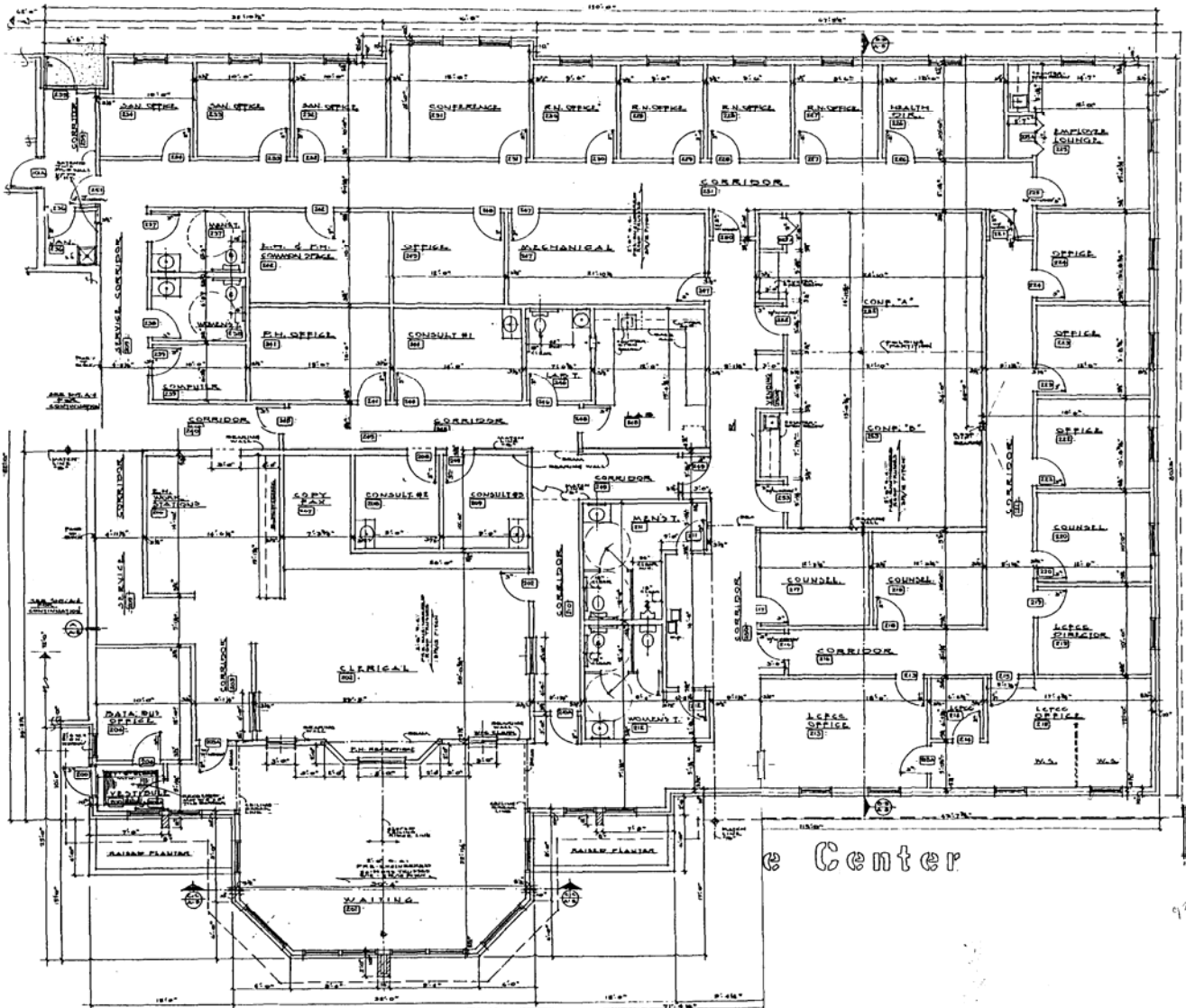
**7401 E. Duck Lake Rd., Suite 100
Lake Leelanau, Michigan 49653
Phone: (231) 256-0200
Fax: (231) 256-0225**

Effective July 1, 2007, the Benzie-Leelanau District Health Department has approximately 4,720 SF of office space available at the Connie Binsfeld Resource Center located at 7401 E. Duck Lake Road in Lake Leelanau. This space was formerly used as an Alternative School.

Effective the end of this year, we will have an additional 632 SF of office space available. This space may be leased by for-profit organizations.

The Connie Binsfeld Resource Center was opened in February of 1999 for government and non-profit agencies. Tenants have access to common areas which include meeting rooms, restrooms, waiting rooms and parking areas. The location of the Binsfeld Building is just east of the unincorporated village of Lake Leelanau and approximately one mile west of the new Leelanau County Government and Courthouse facility.

This is just a summary of what we have available and we are open to modifying existing space. More detailed information regarding this facility can be done by contacting William A. Crawford, Health Officer, at (231) 882-2104.



Leelanau Community Resource

e Center

THE ARCHITECTURE FIRM
 ARCHITECTS, INTERIORS
 AND PLANNING CONSULTANTS
 1000 W. WASHINGTON ST.
 ANN ARBOR, MI 48106
 313.763.1100

A-G

925-1900

