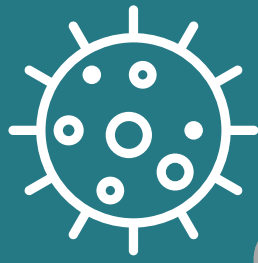


COVID-19 positive or exposed



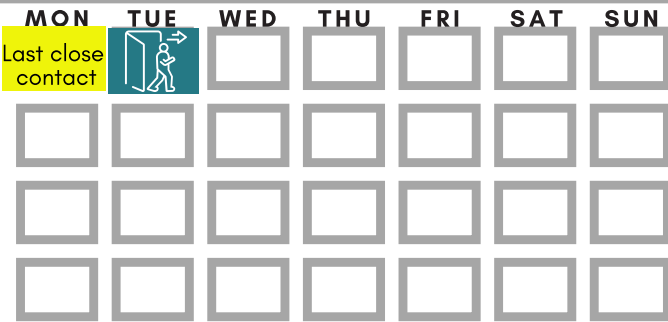
LET'S HELP STOP THE SPREAD OF
CORONAVIRUS

WHEN CAN I BE AROUND
OTHERS AGAIN?

Close Contact and Fully Vaccinated

SCENARIO 1

Sasha's partner tested positive on Monday and isolates in a separate room. Sasha is fully vaccinated so she does not need to quarantine. Sasha should self monitor for symptoms.

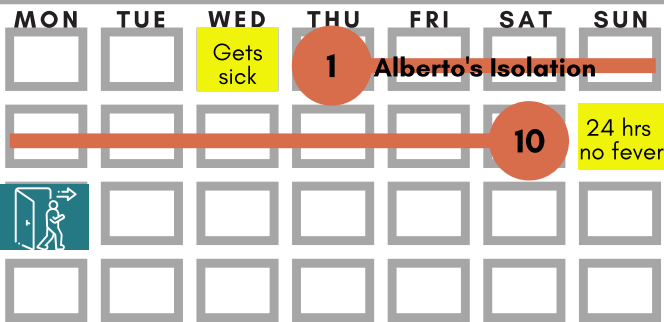


If symptoms appear, Sasha should quarantine for 10 days.

Isolation with Lingering Symptoms

SCENARIO 2

Alberto gets sick on Wednesday and has a fever and cough for ten days. He cannot end isolation until it's been ten days and he's fever-free for 24 hours.

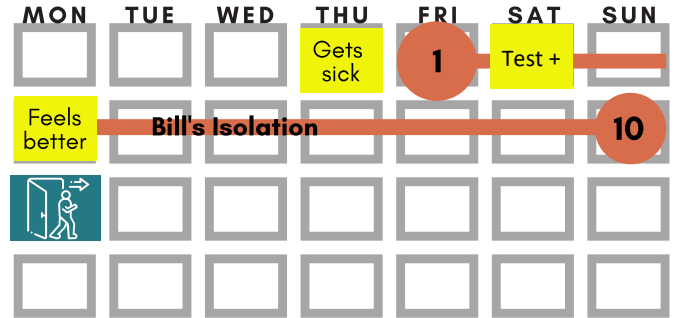


Alberto isolates the ten days plus one extra day.

Isolation with Brief Illness

SCENARIO 3

Bill gets sick and gets tested on Thursday. Saturday the test comes back positive. He feels better and his fever ends on Monday. Even though he seems well earlier, he still must isolate for a full ten days since his symptoms started.

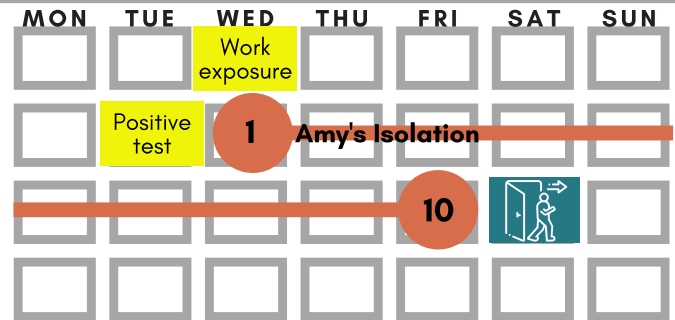


Bill's isolation ends after ten days after onset of symptoms.

Asymptomatic Case

SCENARIO 4

Amy's co-worker tested positive for COVID-19. Amy is fully vaccinated so she does not need to quarantine and decided to get tested after 5 days even though she never felt sick. Her test comes back positive.

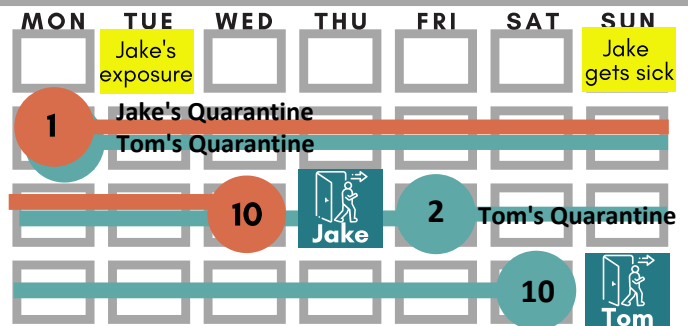


The positive test starts isolation since Amy is asymptomatic.

Household Quarantine and Isolation

SCENARIO 5

Tom's son, Jake, was exposed at school. Jake quarantines for 4 days and gets sick. Now, Jake isolates and Tom quarantines. Tom cares for Jake. He is exposed until Jake's isolation ends.



Tom's quarantine starts as soon as Jake gets sick, but the 10 day count starts after Tom's last exposure to Jake.

Isolation- for people with a positive COVID-19 test.
Quarantine- for symptomatic people who are close contacts of (i.e. exposed to) someone who is ill.
Close contact- someone who was within 6 feet of a person who is sick for 15 minutes or more (can be cumulative) within a 24-hour period. This can be anytime during the sick person's isolation or two days before the person got sick. This is regardless of face mask use.